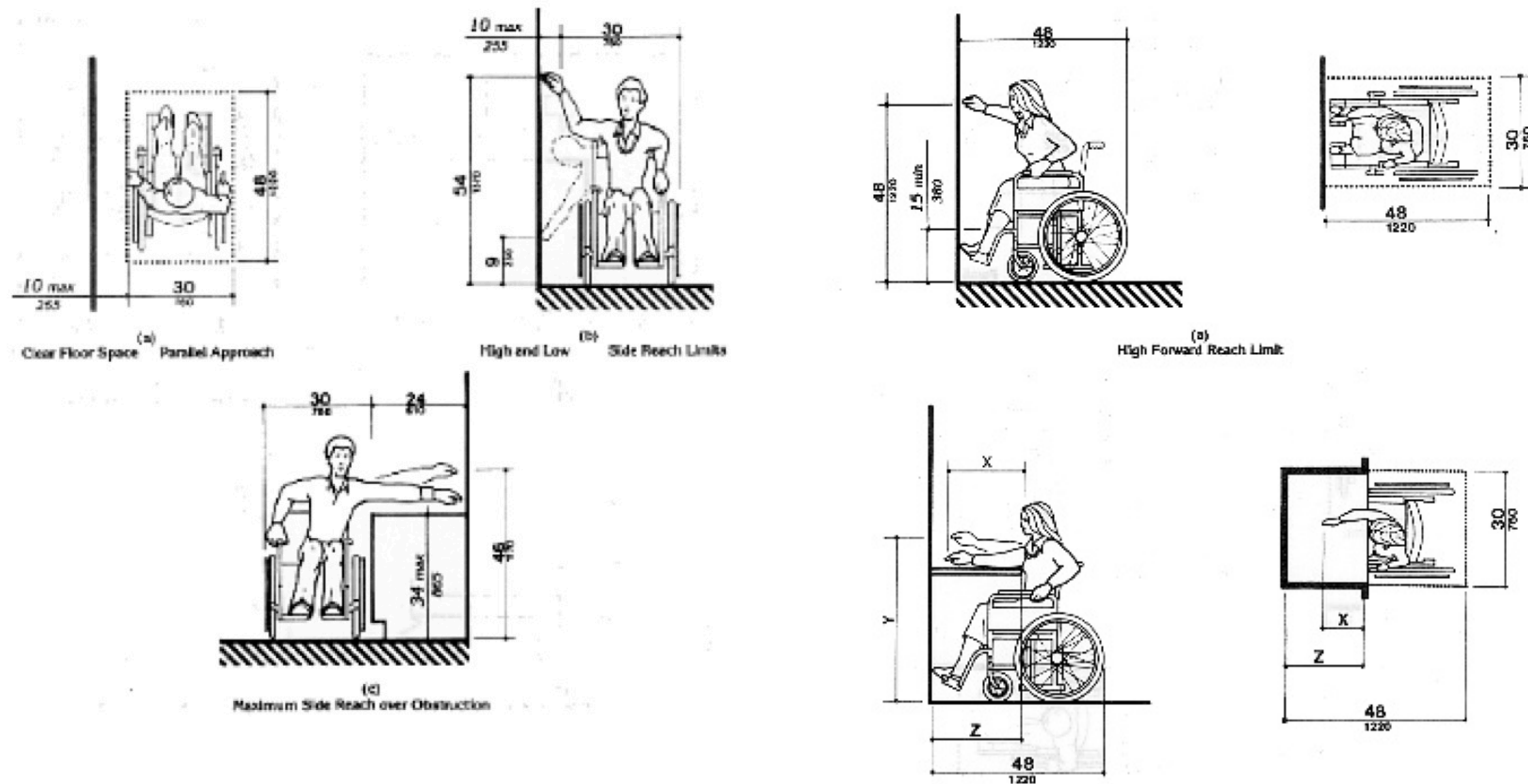


Creating accessible work space using ADA guidelines

Reach Guidelines



Turn Spacing Guidelines

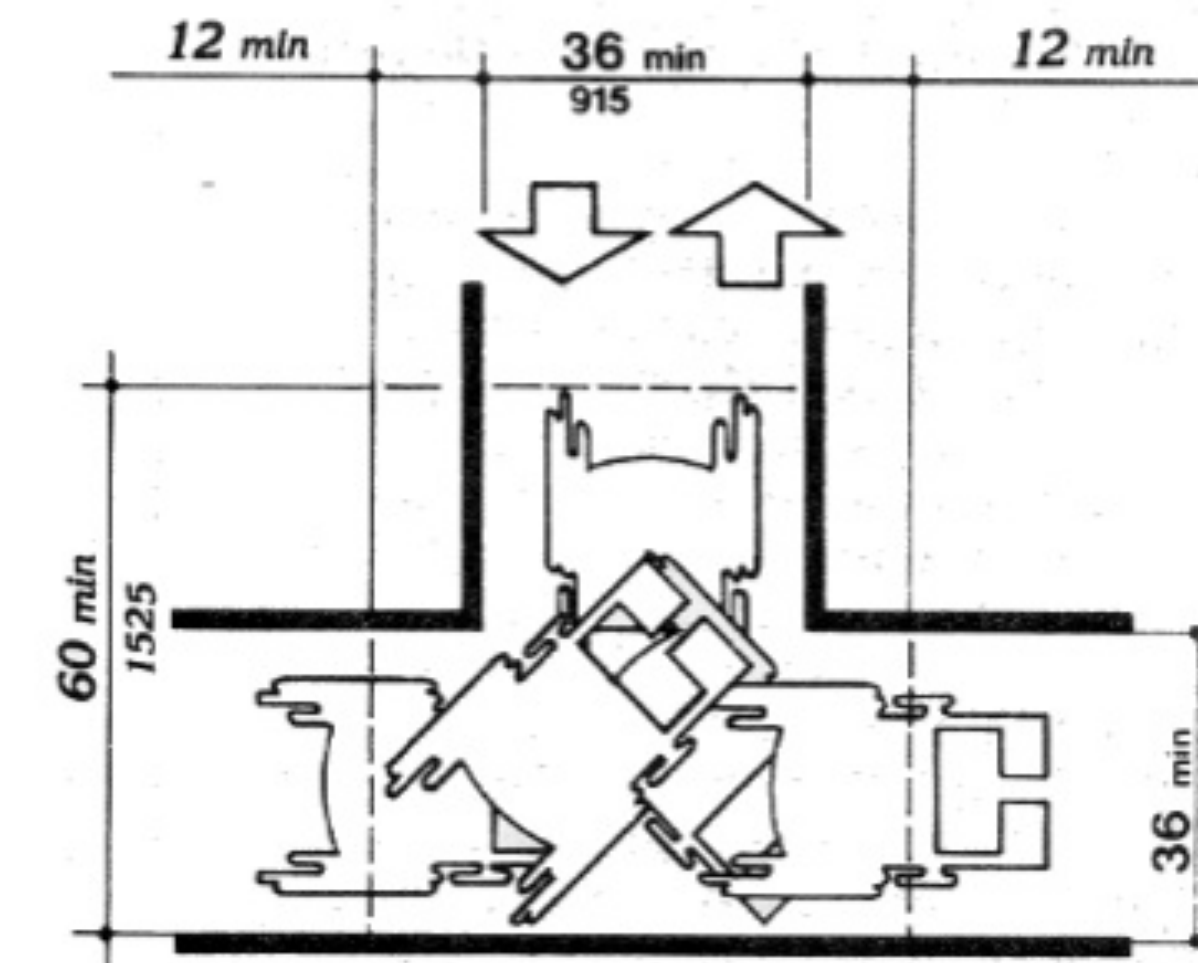


Figure 3b
Wheelchair Turning Space
T-Shaped Space for 180 Degree Turns

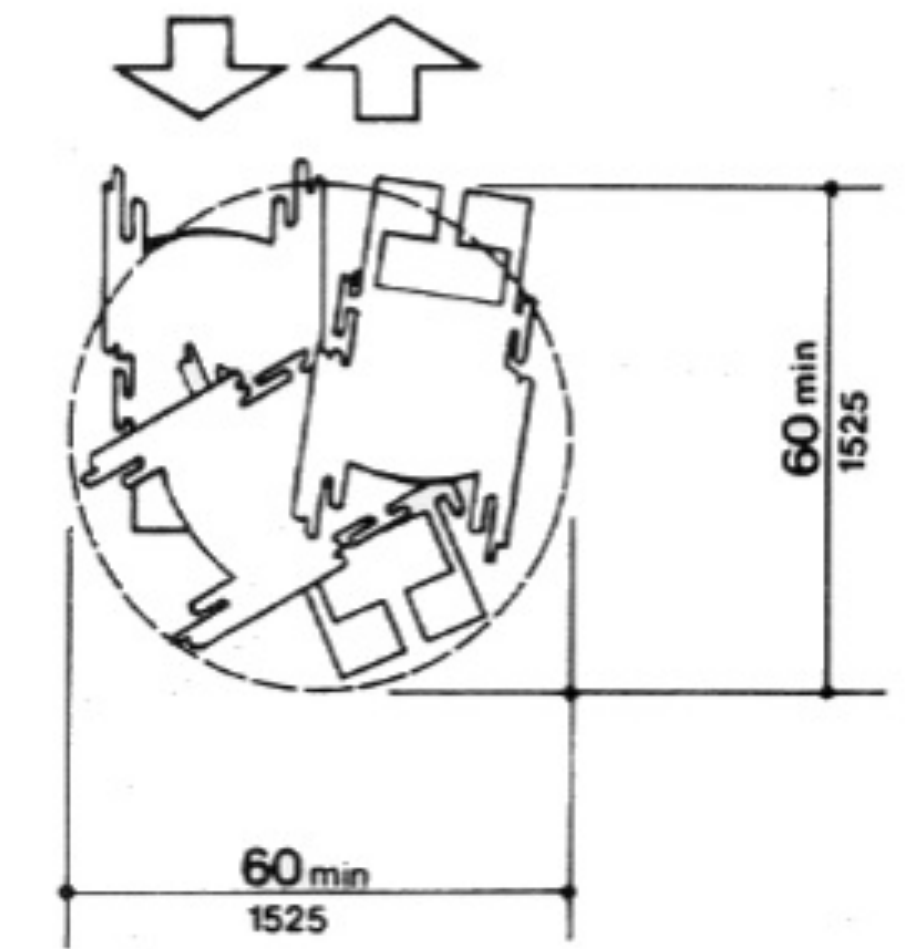


Figure 3a
Wheelchair Turning Space
60-in (1525 mm) Diameter Space

4.34.3 Reach Ranges.

- (1) Forward Approach Only. If only a forward approach is possible, operable parts of all controls shall be placed within the forward reach range specified in 4.2.5.
- (2) Parallel Approach Only. If only a parallel approach is possible, operable parts of controls shall be placed as follows:
 - (a) Reach Depth Not More Than 10 in (255 mm). Where the reach depth to the operable parts of all controls as measured from the vertical plane perpendicular to the edge of the unobstructed clear floor space at the farthest protrusion of the automated teller machine or surround is not more than 10 in (255 mm), the maximum height above the finished floor or grade shall be 54 in (1370 mm).
 - (b) Reach Depth More Than 10 in (255 mm). Where the reach depth to the operable parts of any control as measured from the vertical plane perpendicular to the edge of the unobstructed clear floor space at the farthest protrusion of the automated teller machine or surround is more than 10 in (255 mm), the maximum height above the finished floor or grade shall be as follows:

Reach Depth		Maximum Height	
inches	millimeters	inches	millimeters
10	255	54	1370
11	280	53 1/2	1360
12	305	53	1345
13	330	52 1/2	1335
14	355	51 1/2	1310
15	380	51	1295
16	405	50 1/2	1285
17	430	50	1270
18	455	49 1/2	1255
19	485	49	1245
20	510	48 1/2	1230
21	535	47 1/2	1205
22	560	47	1195
23	585	46 1/2	1180
24	610	46	1170

For more information contact:
Ohio AgrAbility Program
 Website: www.agrability.osu.edu
 Email: agrability@osu.edu
 Phone: 614-247-7681